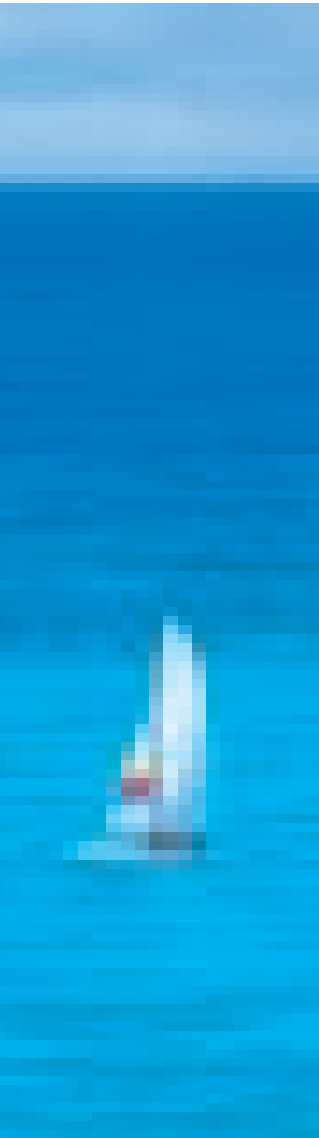
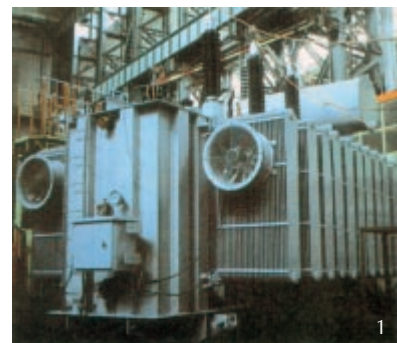


# 10-110kV TRACTION TRANSFORMER



1. Traction transformer
2. Traction transformer for Da-Qin railway line
3. Traction transformer for Zheng-wu railway line
4. SFY7-75000kVA/110kV Scott transformer operating in Daqin line



The 3 phase /2 phase impedance matching balance connected traction transformer for electrification railway line we produced is fit for the running condition of frequent short-circuit, short period of severe overload and unsymmetrical loading of 3 phase and an area of outdoor with an altitude of less than 1000 meter or 2500 meter. This new type traction transformer is greatly improved both in structure and performance with an unsymmetrical structure. Compared with the interntionally used Scott connected transformer, the transformer is also improved and therefore different, and, meeting with the general and special demand of railway electrification.

### Technical parameter sheet for traction transformer

Type	Rating (kVA)	voltage (kV)		No-load loss (kW)	load loss (kW)	Impedance (%) H-L	No-load current (%)	Connection	weight (kg)				Outline dimensions (L × W × H mm)
		H.V	L.V						Active part	Oil	Total	Main body for transport	
SFY	16000	110	27.5	16.7	91	10.5	1.2	YN,d11	16670	7030	29695	24230	4164 × 4188 × 4565
SFY	20000	110	27.5	19.5	112	10.5	1.2	YN,d11	20670	8300	36430	30000	5460 × 4915 × 4640
SY	20000	110	27.5	19.5	112	10.5	1.2	YN,d11	19620	9515	38345	28020	5660 × 4620 × 4640
SFY	25000	110	27.5	26.5	129	10.5	1.2	YN,d11	22650	9340	39180	32170	5140 × 4930 × 4720
SFY	31500	110	27.5	28.0	153	10.5	1.1	YN,d11	27975	10325	46330	38640	5695 × 5110 × 4970
SY	31500	110	27.5	28.0	153	10.5	1.1	YN,d11	28000	11880	51600	38640	5818 × 4810 × 4980
SFY	40000	110	27.5	36.5	183.5	10.5	1.0	YN,d11	31820	11171	51790	43330	5980 × 4470 × 4960
SFY	50000	110	27.5	43.0	22.8	10.5	1.0	YN,d11	37810	13365	61825	51560	6150 × 4580 × 5130
SFY.2	20000	110	27.5	25.0	12.5	10.5	1.2	YN ▽	20440	8750	36590	30170	5300 × 4500 × 4800

